

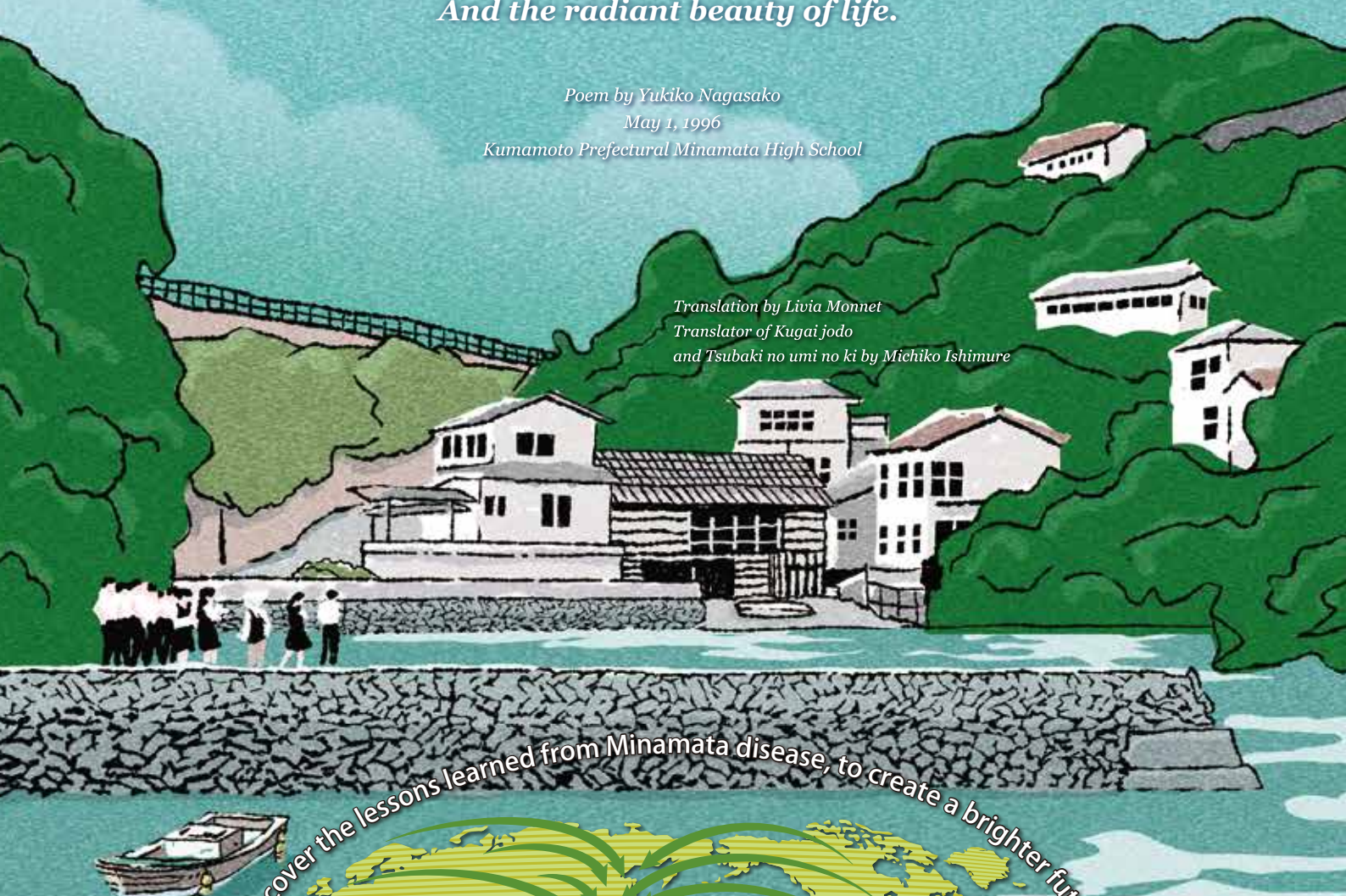
Learn about Global Issues in the Minamata-Ashikita Area

The Mountain Bell

*No change in the color of the sky, it's the same old blue.
The sea stretches as blue as we have always known it.
The mountain forests seem as green as ever
Life shines bright, its radiance unchanged
Let us keep protecting, now and in the years to come
These immutable treasures
And the radiant beauty of life.*

*Poem by Yukiko Nagasako
May 1, 1996
Kumamoto Prefectural Minamata High School*

*Translation by Livia Monnet
Translator of Kugai jodo
and Tsubaki no umi no ki by Michiko Ishimure*



Discover the lessons learned from Minamata disease, to create a brighter future!

About 950,000 people from 176 countries have come here
to learn about the impacts of Minamata Disease





◆ Experience Local Culture Choose from a wide range of activities

Try Sea Kayaking!
(Limited to 10 people)

Explore the sea or a lake in a sea kayak

"Utasebune" Sailboat Experience
(Limited to 24 people)

Take a relaxing ocean cruise and try traditional fishing methods
※ Optional meal onboard

Japanese Candle Making
(Limited to 40 people)

Make your own candles using local tree nuts

◆ Sample Itinerary

Day 1

- ★ Guided tour: **Shoreline Fieldwork**
Go on a tour with a field guide who will bring you to places related to Minamata Disease. Learn about the history of Minamata from a local's point of view.
- ★ Guided tour: **Tour of Minamata Disease Municipal Museum**
- ★ Guided tour: **Learn about People's Experiences of Minamata Disease**
Listen to stories from locals, researchers, journalists and municipal employees.
- ★ Guided tour: **Memorial Service**

Day 2

- ★ Guided tour: **Tour of an Eco Town**
Take a tour of a recycling facility and learn about garbage separation and how the town disposes of items such as electrical appliances, bottles, and motor oil.
- ★ Guided tour: **Experience Local Culture**

Embark on this meaningful journey!

Japanese Inn with an Onsen (Hot Spring) and Ocean Views

A hot spring town with a beautiful sunset over the sea

Kumamoto Castle

An Important Cultural Property of Japan
View the reconstruction progress of the earthquake-damaged castle

Japanese Cuisine : Washoku

A UNESCO Intangible Cultural Heritage

● Past delegations visits:

JICA, The National University of Singapore, Nanyang Polytechnic, Taiwan, The Japan Korea Environmental Youth Exchange, The Chinese YMCA of Hong Kong, The Government of Thailand, The National Chung Cheng University, Kyushu University Institute for Asian and Oceanian Studies

● Book Your Trip at a Participating Travel Agency

● For additional information:

Kanshiranui Planning General Incorporated Association

2-4-8-1F Showa Town, Minamata City,

Kumamoto 867-0051 JAPAN

TEL+81-966-68-9450 (Japanese)

Email info@minamatakumamoto.jp (Japanese/English)

